

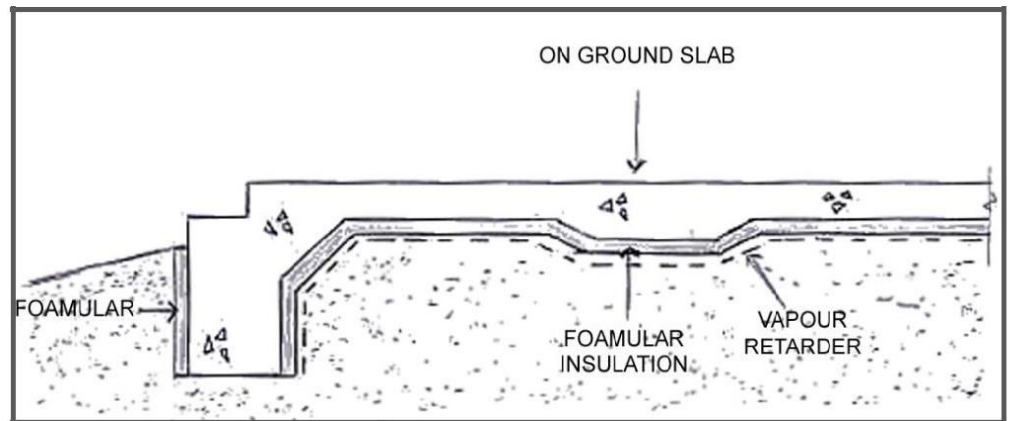
FOAMULAR®

Energy-Saving, Moisture-Resistant XPS Insulation

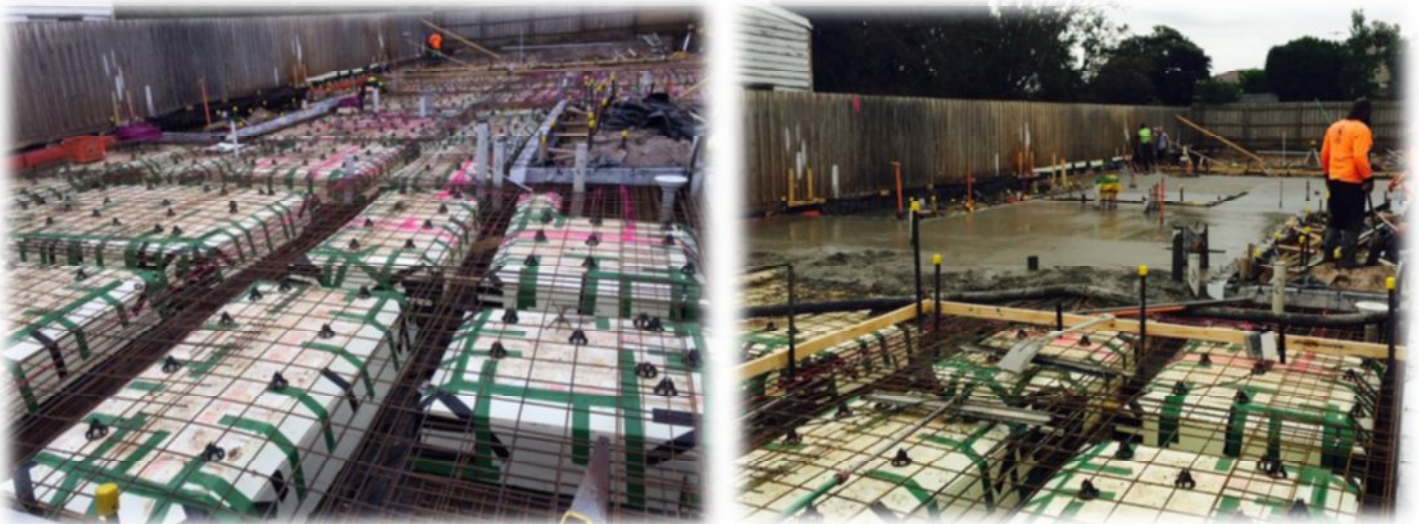
Application: Foamular Insulation under Concrete Slab on ground.

Installation Options for Heated Slabs:

1. The **minimum requirement** is for Insulation to be placed against slab edge to 300mm below ground level.
2. For **improved performance** lay Foamular over flat area as well as slab edge.



3. For **maximum performance** Foamular is laid against slab edge, over flat areas and into trenches prior to concrete pour as below.



Recommended Material FM 300 30 – 60mm

For additional information contact

Gus Villablanca – 0403 055 024

sales@austech.com.au

www.foamular.com.au

