

FOAMULAR®

Energy-Saving, Moisture-Resistant XPS Insulation

Application: Residential On Ground Slabs with Floor Heating Systems

Improved energy efficiency is achieved by using Foamular as a thermal barrier under the slab and around the exposed slab perimeter

In simple terms heat will transfer to cooler medium such as the ground and external air. To keep the slab warm a continual supply of energy is required to replace escaping heat.

Fixing Foamular as a thermal barrier minimises heat loss so less energy is required to maintain slab temperature.

Long term energy efficiency is achieved by this simple application.

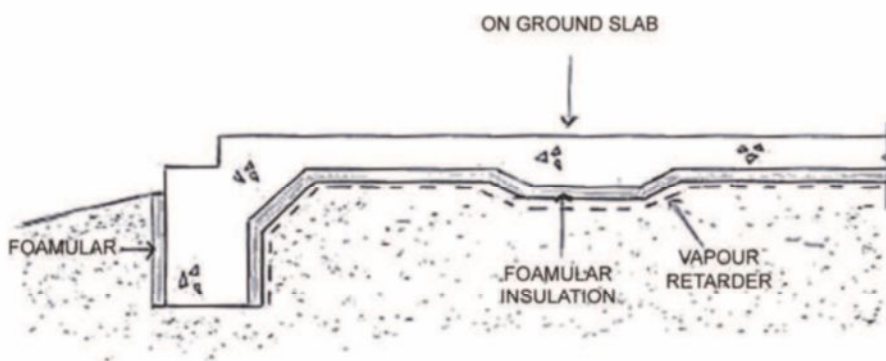


“Lower Energy Demand = Lower Operating Costs = Lower Greenhouse Gas Emissions”

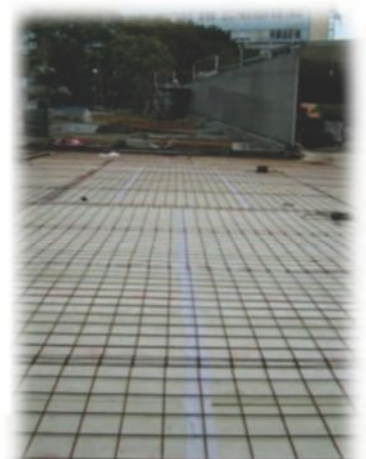
Installation: Foamular is laid directly over the slab area, on top of the plastic sheeting, with supports and reinforcement placed over the Foamular.

As Foamular is not effected by moisture, soil born bacteria or mould it can be back filled against for gardens etc. with no loss of thermal a physical properties.

Recommended Material: Foamular Metric 300/30mm (R1.07) or FM 300/50mm (R1.78) is recommended for this application.



For Additional Information,
Gus Villablanca - 0403 055 024
sales@austech.com.au
www.foamular.com.au



Foamular Insulation at the University of Sydney, ready to have the slab laid on top.