

# FOAMULAR®

Energy-Saving, Moisture-Resistant XPS Insulation

**Application:** Underslab insulation Residential raft slab on ground – **Fixing Guide.**

**Specification:** Material to be Foamular extruded closed cell insulation with a minimum compressive strength of 300kpa (FM300). The thickness will be a minimum of 30mm/ R1.07 or in a thickness to meet a required R value. See below.

FM300/30-R1.07	FM300/40-R1.42	FM300/50-R1.78	FM300/60-R2-14
----------------	----------------	----------------	----------------

**Fixing Guide:** The slab area must be prepared as per the National Building Code requirements in regard to controlled or rolled fill over which an acceptable vapour barrier has been laid.

The Foamular boards are 2400x600 in size and are laid directly over the vapour barrier in a brickbond pattern. During laying Boards should be held in place with 3-4 strips of duct tape (approx. 300mm in length). Taping of all edges is an option if preferred.

Foamular cuts easily with either Stanley knife or hand saw and when needed for tapered edge into trench the boards can be cut into required width with a straight edge.

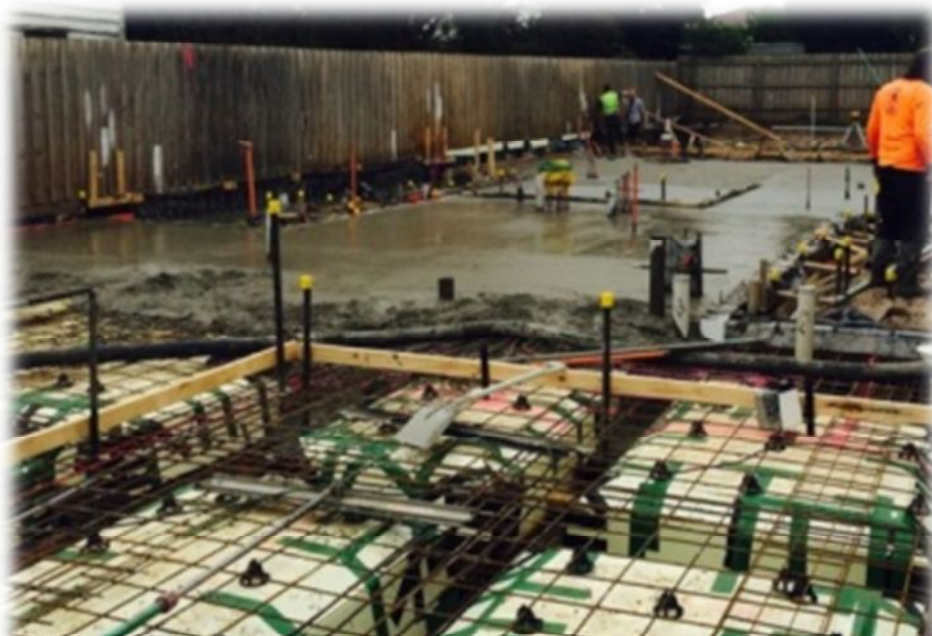
Likewise when used as slab edge insulation boards are easily cut into 2400x300 pieces.

Once slab area is covered, bar chairs and reo are placed directly on to the Foamular prior to pour.

On very windy days it may be advisable to layout smaller areas and place chairs and reo to keep boards in place.

Laying smaller areas is also advisable if slab area is rough. This minimises cracking due to foot traffic.

Fixing to slab edge prior to backfill can be with concrete nails or suitable construction adhesives, eg, sikabond foam fix, sikabond or liquid nail Fast. Adhesives must be water based. Alternately Foamular can be placed inside formwork and will adhere to the concrete.



For Additional Information call Gus Villablanca - 0403 055 024

[sales@austech.com.au](mailto:sales@austech.com.au) [www.foamular.com.au/](http://www.foamular.com.au/)