



## 1. Installation

Foamular-Metric XPS is fastened directly to the timber or steel wall frame using Auslok 50mm nylon washers and appropriate fixing screws. •

- For timber use CSK galvanised 10 x 8mm chipboard or treated pine screws.
- For steel frame use Wingtek class 3 10 gauge screws

Screw length is dependent of Foamular thickness. Screws must be a minimum of 25mm longer for timber and 15mm longer for steel.

Auslok washers should be pulled in flush with the board's surface only. A minimum of 12 washers should be used per board. In cyclonic rated areas this should be increased to 24 minimum.

- For masonry fixing – FM202 Auslok masonry cannulas are available.

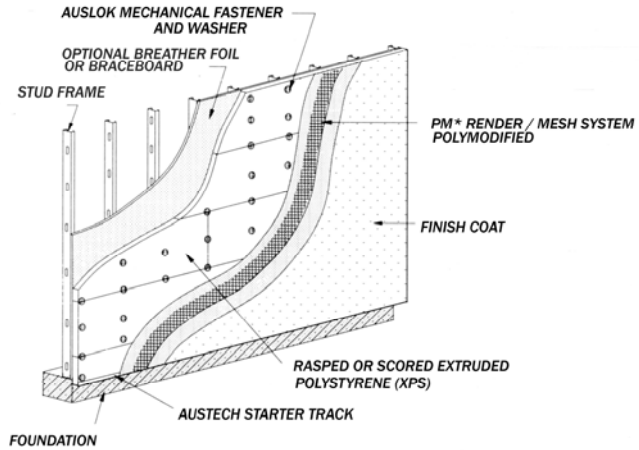
The boards are fixed horizontally in a brick bond fashion.

**Note:** Prior to commencing, any areas that will support fixtures, lighting, balustrades etc, should be braced, blocked or reinforced.

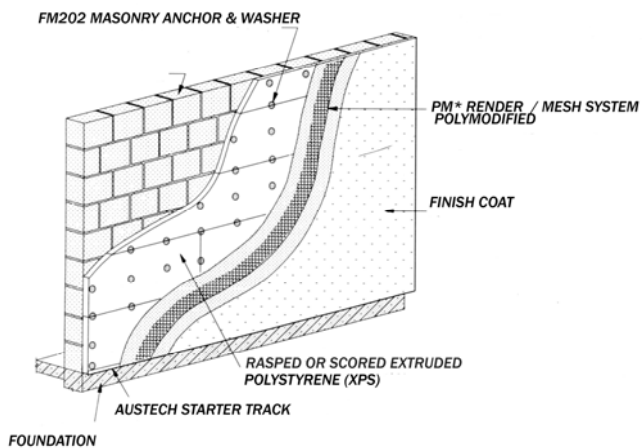
The use of a breather foil over the external walls is quite acceptable. For Foamular 25 and 30mm thick, brace board must be used.

The starter track should be fixed and the first row of boards cut in half-length wise to allow a flat surface to sit into starter track.

## 2. General Construction



G1.01 FRAMED WALL APPLICATION



G2.01 MASONRY WALL APPLICATION



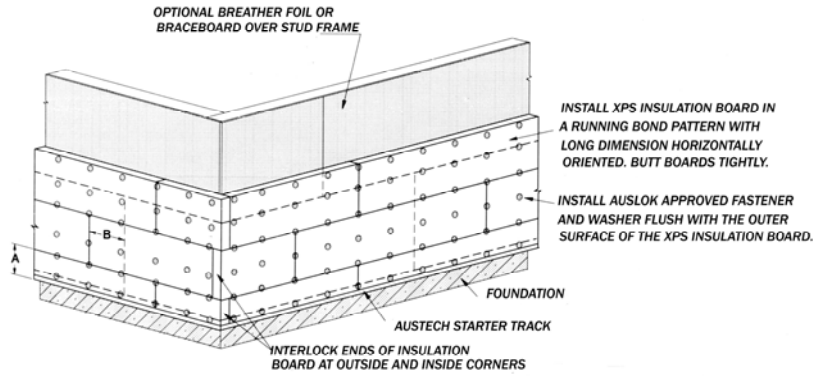
### 3. Joining the Boards.

The boards should be fixed as tightly as possible.

If boards join off a stud additional noggins/blocking must be installed to ensure secure fixing.

Boards do not require gluing to frames or between joins. This allows frame to flex with minimum stress to render finish.

Gaps wider than 3mm should have a sliver of Foamular inserted but not glued.



G3.01 EXTRUDED POLYSTYRENE (XPS) INSTALLATION

### 4. Cutting Foamular Metric XPS

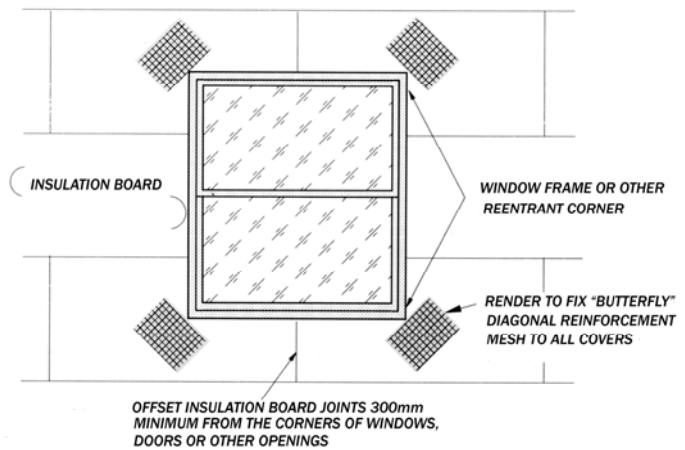
A power saw with standard wood blade, will give a clean flat cut.

Hand saw, stanley knife, and hot wire also give acceptable results.

PPE should always be worn.

Before render application the Foamular boards should be lightly scored with a stainless steel wire brush, rasp or notched trowel.

This is to allow render maximum key to the insulation board.



G4.01 DIAGONAL CORNER REINFORCEMENTS



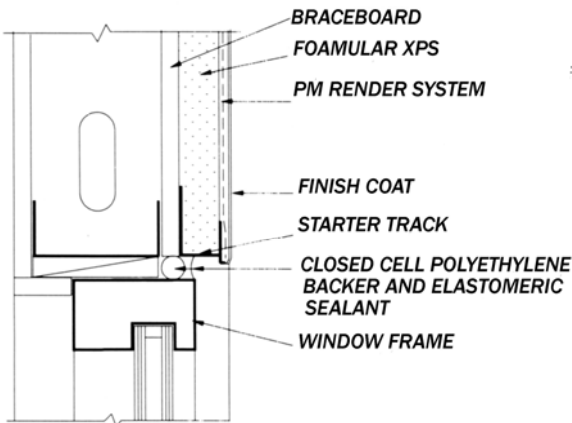
## 5. Standard Building Practices

Control / Expansion and Isolation joints should be installed as directed by architects/ engineer for individual projects.

Included in this fixing guide are some details for basic applications.

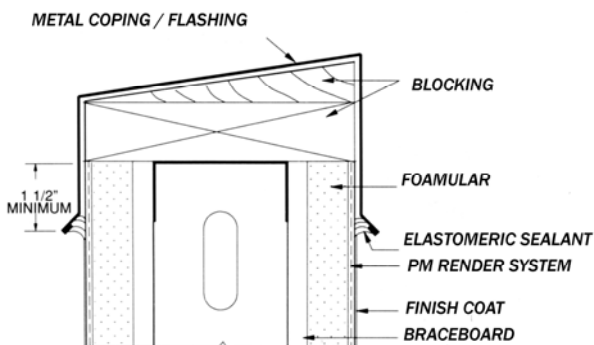
Standard building practices should be applied in regard to flashings, termite protection, material handling etc. When using Foamular XPS Insulation Board.

## 6. Windows



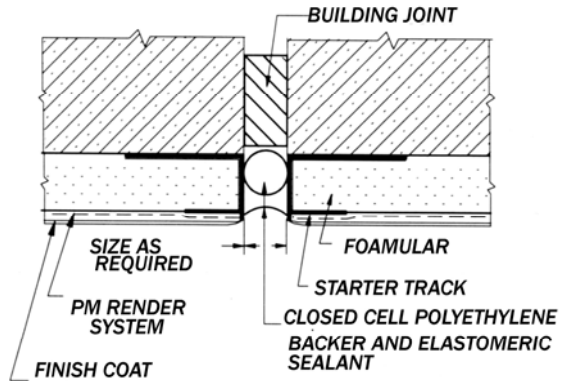
W2.01 HEAD WITH DRIP EDGE TRACK

## 7. Roof Line

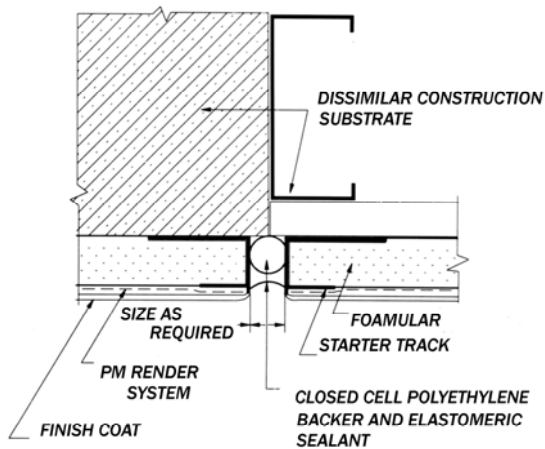


R1.01 PARAPET FLASHED PRIOR TO COATING

## 8. Expansion Joints.



E2.01 BUILDING ISOLATION JOINT



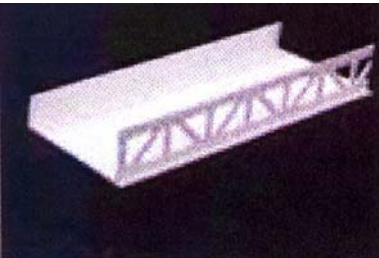
E3.01 DISSIMILAR SUBSTRATES



**90° External Bead** (Box of 50)



PT-RE9030-3.5	Pro trim Render External 90° 3m x 3.5mm	3 m
PT-RE9030	Pro Trim Render External 90° 3m x 6mm	3m

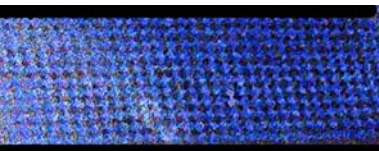


AT - C 50/3.0m	Austech 50mm C Channel - Starter	3m
----------------	----------------------------------	----

**Reveal Bead** (Box of 50)



PT-RR40/30	Pro Trim Reveal Bead 37mm x 3m - 6mm	3m
PT-RR60/30	Pro Trim Reveal Bead 57mm x 3m - 6mm	3m



	CMX Mesh. 150g/m <sup>2</sup> 1m x 50m roll	50m <sup>2</sup>
--	---	------------------